

DIGESTIVE SYSTEM.

ORAL CAVITY_A

TEETH_B

TONGUE.

SALIVARY GLAND.

PHARYNX_E

ESOPHAGUS_F

UPPER GASTROINTESTINAL TRACT_{*}

STOMACH.

SMALL INTESTINE_{*}

DUODENUM_H/JEJUNUM_{H1}/ILEUM_{H2}

LOWER GASTROINTESTINAL TRACT_{*}

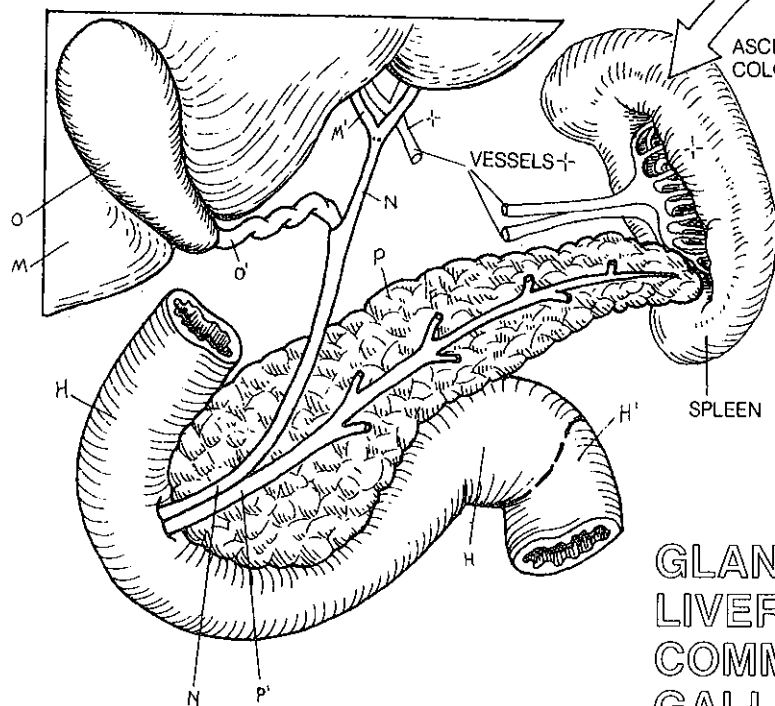
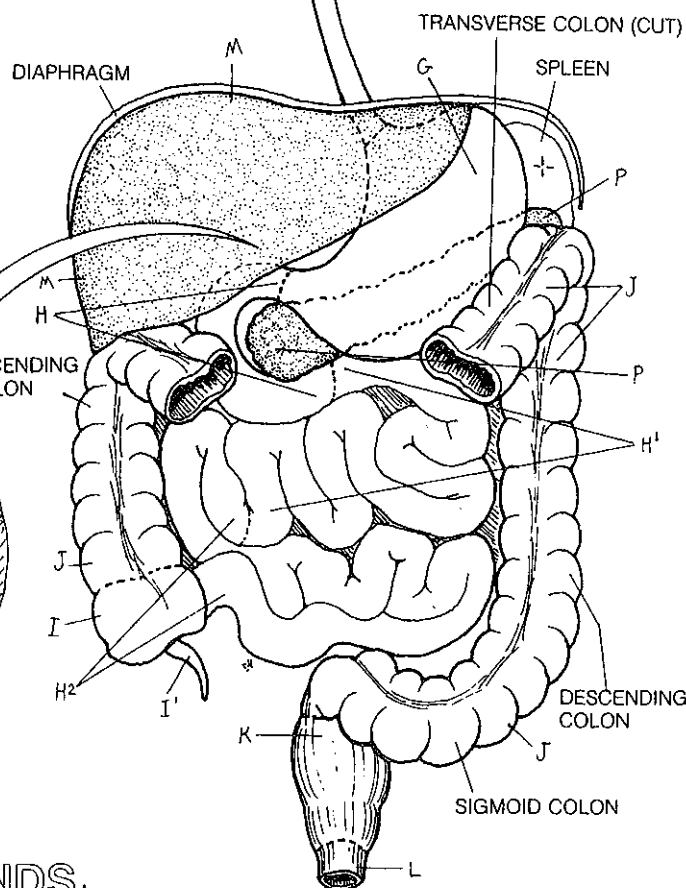
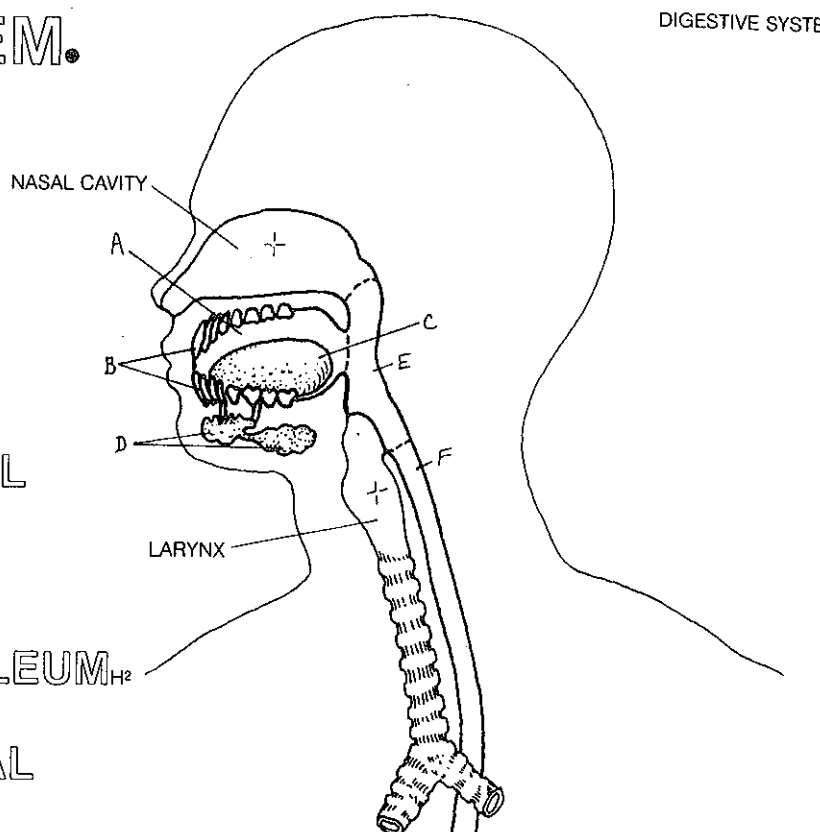
LARGE INTESTINE_{*}

CECUM/APPENDIX_{*}

COLON

RECTUM_k

ANAL CANAL



GLANDS_{*}

LIVER_M/HEPATIC DUCT_{M1}

COMMON BILE DUCT_N

GALLBLADDER_O/CYSTIC DUCT_{O1}

PANCREAS_P/DUCT_{P1}